

Real Life Experience - Using CMMI L2 Processes and XP Practices

Orhan KALAYCI
Sarit DİNMEZ
Emel SAYGIN
Serden FERHATOĞLU
Gülfer AKGÜN
Hasan ÖZKESER
Şenol BOLAT

Nitelik Danışmanlık Ltd.
BİMAR Bilgi İşlem Hizmetleri A.Ş.
BİMAR Bilgi İşlem Hizmetleri A.Ş.
BİMAR Bilgi İşlem Hizmetleri A.Ş.
BİMAR Bilgi İşlem Hizmetleri A.Ş.
BİMAR Bilgi İşlem Hizmetleri A.Ş.
BİMAR Bilgi İşlem Hizmetleri A.Ş.

Agenda

- Why?
- CMMI Processes Piloted
 - Requirements Management
 - Project Planning
 - Configuration Management
- XP Practices Piloted
 - Cards (Planning the game)
 - Pair Programming
 - First Test then Coding
- Conclusion

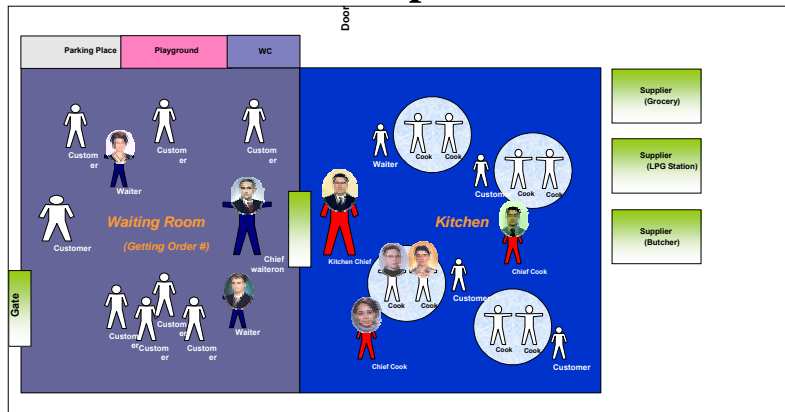
WHY?

- Before applying the process to the real customer, this test provided the chance to make the necessary improvements in the process
- The opportunity that comparing the designed process and the realized process, provided the process design teams to see the differences between them
- This was the exercise to make the process more practical. For example standard content templates (communication plan etc...) were created.

Requirements Management Purpose

- To make the customers' needs to be taken correctly, accurately and exactly
- To take managerial commitments from both BİMAR and the customer
- To keep track of these commitments and therefore to provide service to the customer on time with minimum errors

Requirements Management Metaphor



Requirements Management Main Activities

- Taking the Order
- Keeping Track Of Accepted Order
- Closing Of The Order

Project Management Purpose

- Do the most valuable(the most important, urgent etc...) thing first
- Coordinate the related parties
- If any change occur, go to the first step

Project Management Main Activitie

- İteration based planning
- Filling technical cards
- Effective programming
- Arranging the work environment
- Frequent communication

Configuration Management Purpose

The purpose in establishment of the Configuration Management System is to identify the work products to be kept in this system, to follow up the modifications on work products and to provide and maintain their consistency and integrity by making control on them.

Configuration Management Metaphor

Account Activity

POS
Settings
Personel Information
Password
Limit

Update Information

Deposit Box



Accounts
Retail Banking
Commercial Banking
Business Banking

Payments
Manuel Payments
Standing Orders

Money Transfers

Statement of Activity

THE BANK

Configuration Management Main Activities

1. Project-Starting Step
2. Project-Operating Step
 - To check in the work product
 - To check out work product
 - To delete the work product
 - To create a baseline
 - To withdraw the baseline
 - To update the data on work product
3. Project-Ending Step

XP Practices

➤ **Cards,**



➤ **Pair Programming,**

➤ **First Test Then Coding,**



XP Practices Cards

BİMAR			MÜŞTERİ KARTI				Kuruluş	
Kart No:			Kart Adı:				Kuruluş Adı:	
Proje No - Adı			Sistem Tipi		Yeni	Düzeltilme	Değiştirme	
Durum/Konu/Şirket			Genel	Supper	Yeni			
BİMAR Kurumu			Sektör		Tebrik Süre Talimatları			
Sistem #/Y			Ek Doküman:					
İşin Açıklaması:								
İş Takibi:								
Tarih	Durum	Yapılan İş	Açıklama					

Açıklama bilgileri için başka sayfaya bakınız.

XP Practices Pair Programming

How does Pair Programmer work ?

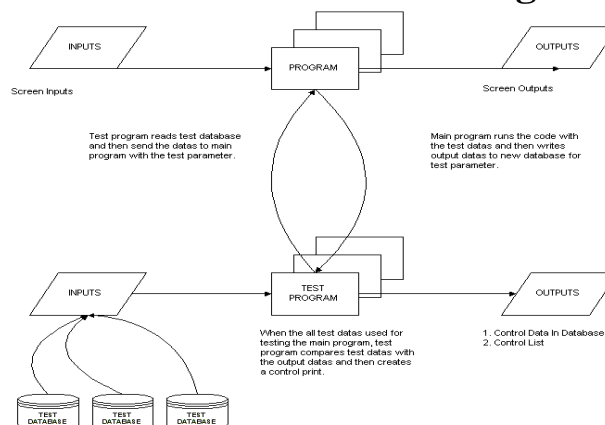
- Sit on the same table and look at the same screen
- Write code in turn
- As one of them writes the code, the other traces the code at the same time.

XP Practices Pair Programming

With the pair programming;

- Bugs are realized and solved early
- Shorter problem solution times because of another different perspective
- High quality code, the number of defects are inconsiderable
- Advantage for the company by sharing knowledge

XP Practices First Test Then Coding



When is it most useful ?

- While writing the test code, it is possible to look at the program from different respects and the defective points of the program can be noticed,
- With the different data, all the program conditions are tested,
- Programs can be tested every time when desired with pressing only one key,
- The test is made by the program and this provides the objectivity in testing,
- It can be observed that, how the last changes in the program effects the old program,

Difficulties encountered;

- The software development platform is RPG programming language on the AS/400 system, (Text based language)
- Difficulties in file management, because of the number of the files increases while testing the complex modules,
- To write the test code of the program, prepared to get lists, is more difficult than to write the test code for the screen controls.

Conclusion

	Cards	Pair Programming	First Test then Coding
Requirements Managements	++	N/A	+++
Project Planning	+++	++	++
Configuration Management	--	N/A	N/A